

Stream Jet

CTC JAPAN
Cutting-Edge Technology Corporation Japan
High Quality Ink Jet Device

Beyond creativity



www.ctc-j.com

Next Generation Ink jet technology

Made in Japan

CTC-Japan

CTC-Japan is an equipment manufacturer and sales company that was spin off, from Kyoto Densanshi Printing Company's technology strength and years of experience in the variable data output printing business.

CTC-Japan's primary goal is to strive and develop digital variable data printing solutions from a printing company's perspective. In the last 10 years, we've been developing high-speed and high quality ink jet printer hardware and software solutions dedicated for variable data printing applications.

| Print Engine Specification | SJ-300 | SJ-500 | SJ-500W |
|--------------------------------|--|----------------------------------|-------------------------|
| Print Technology | Piezo electricity Drop on demand | | |
| Print Width | 576mm max 16heads | 558mm max 5heads | 1120mm max 10heads |
| Print speed | 30m/min(36dpi) | 50m/min(600dpi)/100m/min(300dpi) | |
| Print Controller Specification | | | |
| Platform | Windows | | |
| Display | Color touch panel display | | |
| Preloaded Software | VIPS (Variable Information Print Software) ·Form Layout ·Bar code print(CODE 39, CODE 128, NW-7, ITF, Industrial 2of5, JAN, EAN, 128, DATA Bar, QR Code, PDF 417 and more) ·Automatic Numbering, Check Digit ·External Data Edit (Fixed length and CSV) ·Other function: Layout for printing format, Permutation of data, uniting of data and more. | | |
| Ink | Monochrome UV ink (1L bottle) | | |
| Dryer system | UV curing Metal Halide lamp (SJ500 UV8KVA) | | |
| Power supply | | | |
| Controller system | Single phase 100-240 V 1.5KVA | | |
| Modular system | 3P 200-240 Ground 20KVA(SJ500 with transport) | | |
| Operating room conditions | | | |
| Operating temperature | 15~35°C | | |
| Operating humidity | 20~70%RH (Higher humidity is not acceptable) | | |
| Print controller dimensions | W250mm×L1150mm×H400mm | | W2100mm L2500mm H2000mm |
| Print module dimensions | Please contact our technical representative. | | |

⚠ The date in this brochure was valid at the time of publishing, and is subject to change without notice.



Cutting-Edge Technology Corporation Japan

CTC-Japan, Ltd.

 <http://www.ctc-j.com>



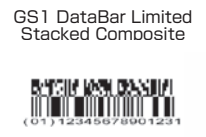
Head office: 426 Oyabu-Cho, Kuze Minami-ku Kyoto Japan Phone +81 75 921 1110
 Technical center: 555-1 Oyabu-Cho, Kuze Minami-ku Kyoto Japan Phone: +81 75 933 0251

Stream Jet digital press is a highly value added ink jet printer designed for variable data printing applications.

It is designed to offer the highest print productivity and quality using state of the art ink jet technologies.

Stream Jet is been used in printing plants around Japan, and has proven to be low in operating cost, reliable, and ease of use.

Barcode Samples



01 Applications

Stream Jet can be used to print a wide variety of industrial products such as logistics, traceability, security, and sales promotion which all requires high image quality variable data out put print. The new awareness of product safety has prompted demand on more sophisticated product labeling with added information and security features. Stream Jet's flexible design can be customized to fit into existing printing press production workflows, and newly developed industrial application machinery.

- Variable Data
- Address, Post code (Personalization)
- Numbering
- Bar code

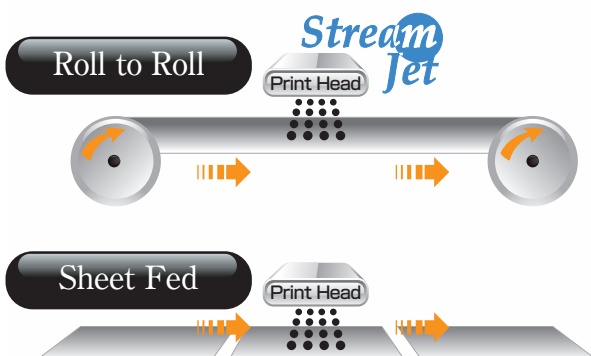
The printing market will see increased demand for variable data output jobs which are very important for logistic/Procurement and advertisement sales promotion.

- 4 Point 1234aAbB漢字あいうえお 豊富な書体 高解像度
- 6 Point 1234aAbB漢字あいうえお 豊富な書体 高解像度
- 8 Point 1234aAbB漢字あいうえお 豊富な書体 高解像度
- 10 Point 1234aAbB漢字あいうえお 豊富な書体 高解像度

02 Market segmentation

- Commercial offset printing
 - Off line print plus variable data print jobs.
- Package printing
 - Off line print or in line print plus variable data print jobs.
- Label printing
 - Can be installed on Label printing press plus Variable data print jobs.
- Combination printing
 - Flexo/offset/Screen/**Ink jet printer** plus Variable data print jobs
- Industrial printing
 - Custom application jobs.

Compatibility



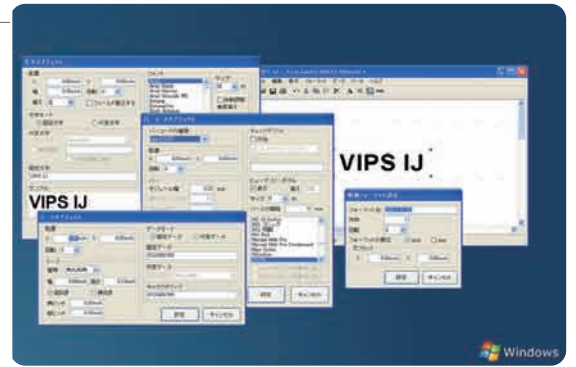
1 SJ-500
This photo is Roll to roll ink jet printer SJ500 model.

System

- Ink jet printer head(Piezo DOD)
- Controller
- PC control and software(VIPS)
- Dryer system and UV lamp(Optional)
- Inspection camera(Optional)

Ink

- UV monochrome ink (Black, Blue or Red etc, 1L bottle)
- Water based pigment ink
- White pigment ink
- MICR ink



Print Materials

Paper —— [Any kind of paper]

Film —— [PP,PET, PVC, Synthetic paper etc.]



04 Features

- Variety of materials
- High productivity
- Roll to roll or Sheet fed
- Short runs, with mass customization of variable data
- Fast delivery time and save cost
- Reduce waste

05 Variable Ink Jet printer plus In Line

- Compatibility
- Save space
- Easy operation (Touch panel display)
- Easy maintenance



SJ-500W

2

This photo is Sheet fed ink jet printer SJ500-W model.